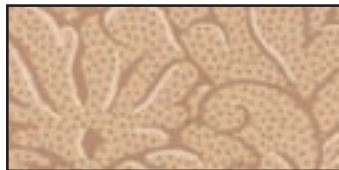


Summertime

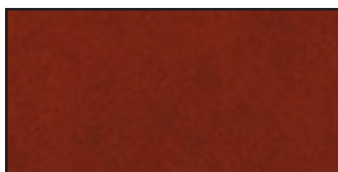
Finished Size: 19" x 28 3/4"



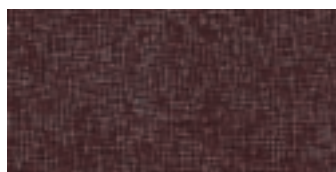
25327-E
1/3 yard
(for Watermelon)



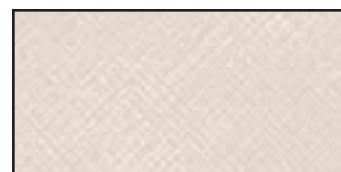
25327-G
1 yard
(Includes borders & backing)



25293-R
1/2 yard
(Includes binding)



20034-J
1 1/4 yards



25293-E
1/2 yards
(background)

Summertime Wall Hanging

Supplies

Background - 1/2 yard

Black - 1/4 yard

Red - 1/2 yard (includes binding)

Green - 1 1/4 yards (includes borders & backing)

Cream - 1/4 yard (watermelon)

Gold and white - scraps (flowers)

Design pieces - 1/8 yard of each or scraps

Fusible Adhesive (lite) - 1/2 yard (omit if hand appliqueing)

Pigma pin .005 or purple disappearing ink pen

Embroidery Floss - #310 Black

Cutting

Background

1 - 12 1/2" x 5 1/2" piece

2 - 12 1/2" x 5 1/4" pieces

3 - 12 1/2" x 2 1/2" pieces

Black

5 - 12 1/2" x 3/4" pieces

3 - 1 1/4" x 42" strips

Red

3 - 1 1/4" x 42" strips

3 - 2 1/2" x 42" strips (binding)

Green

2 - 2 1/2" x 25 1/4" strips (sides)

2 - 2 1/2" x 19 1/2" strips (top and bottom)

Sewing (Arrows are pressing direction.)

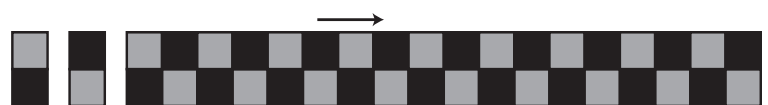
1. Make three strip sets using the 1 1/4" x 42" black and red strips. Cut into 98 - 1 1/4" units.



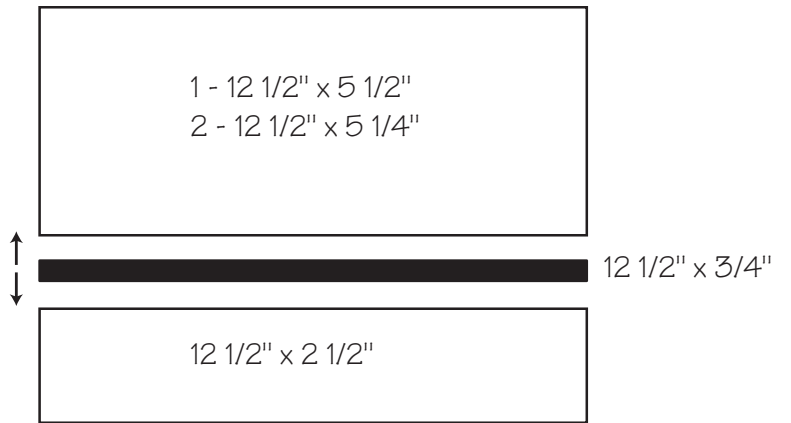
A. Using 1 1/4" units, make:

2 - 29 count side borders

2 - 20 count top and bottom borders

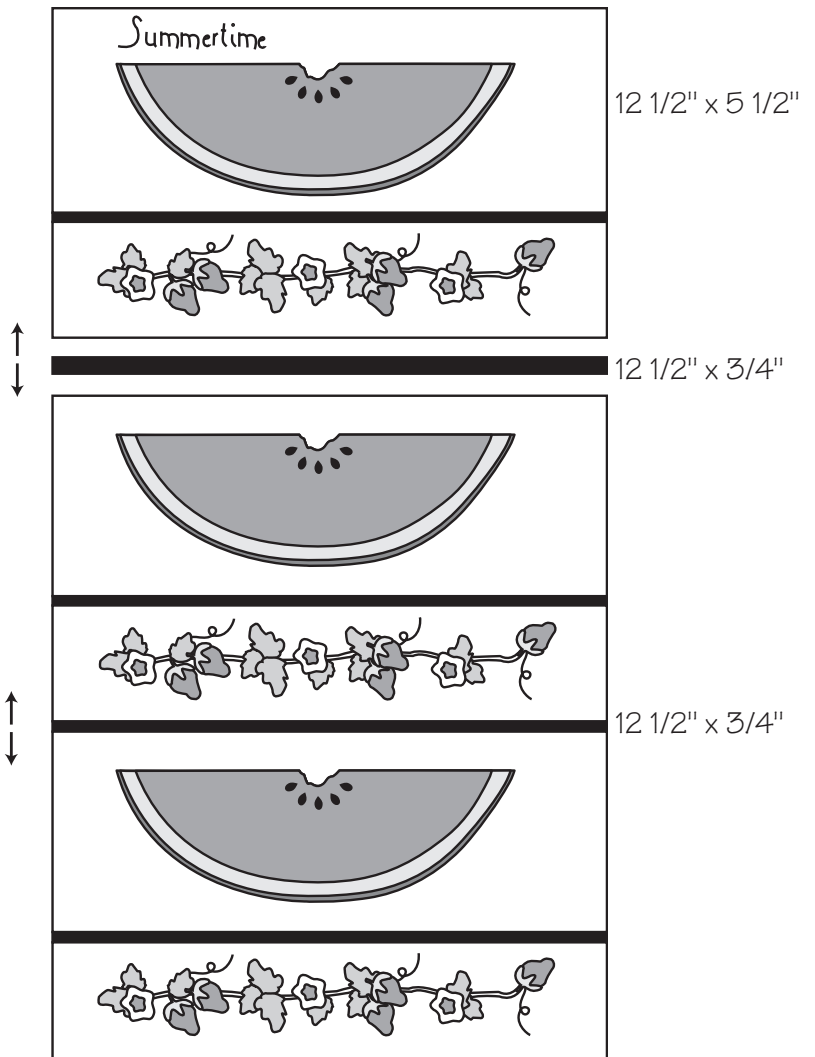


2. Make one watermelon segment using 12 1/2" x 5 1/2" background piece, 12 1/2" x 2 1/2" background piece, and 12 1/2" x 3/4" black strip.



3. Make two watermelon segments using 12 1/2" x 5 1/4" background pieces, 12 1/2" x 2 1/2" background pieces, and 12 1/2" x 3/4" black strips.

4. Using pattern pieces, placement guides, and your favorite method of applique (example: machine button hole stitch, hand blanket stitch or hand applique), center and apply watermelon, leaves, seeds, and strawberry vines to each of the 3 segments.



A. Embroider the word "Summertime" on 5 1/2" segment.

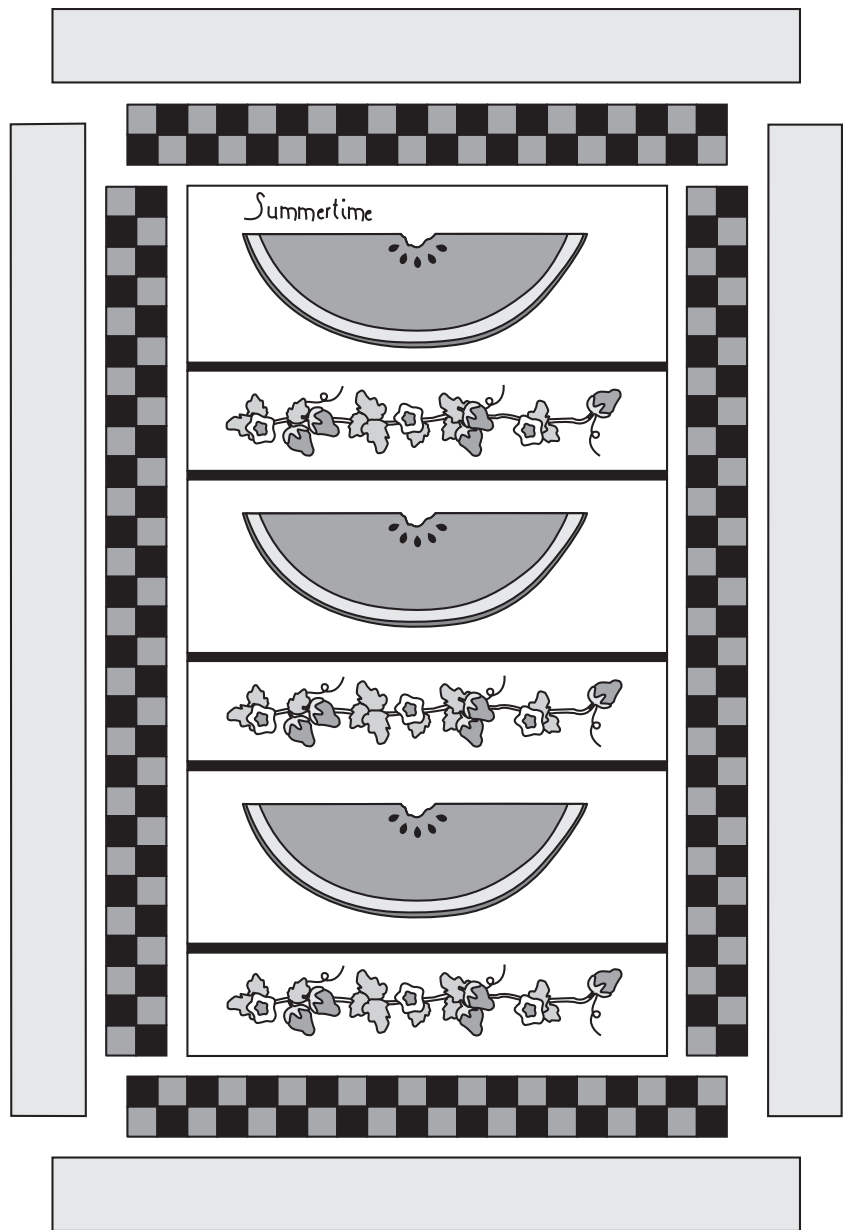
5. Join segments with the two remaining 12 1/2" x 3/4" black strips.

NOTE: The 5 1/2" watermelon segment goes on top.

6. Add pieced side borders, then pieced top and bottom borders.

A. Add 2 1/2" x 25 1/4" side borders, then 2 1/2 " x 19 1/2" top and bottom.

7. To finish wall hanging, layer, quilt and bind.



Embroidery guides

Embroidery Stitches

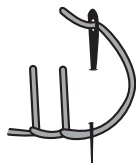
Use 2 strands of floss.

Summertime & Tendrils - Backstitch

Optional: Remainder of design - Hand blanket stitch



Backstitch



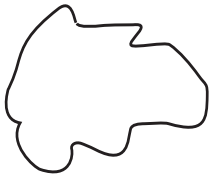
Blanket stitch

Summertime



Tendril

Applique Pattern Pieces



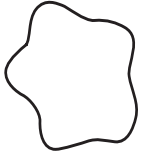
Large leaf
Trace & cut 15



Small leaf
Trace & cut 18



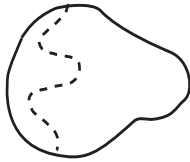
Seeds
Trace & cut 15



Flower
Trace & cut



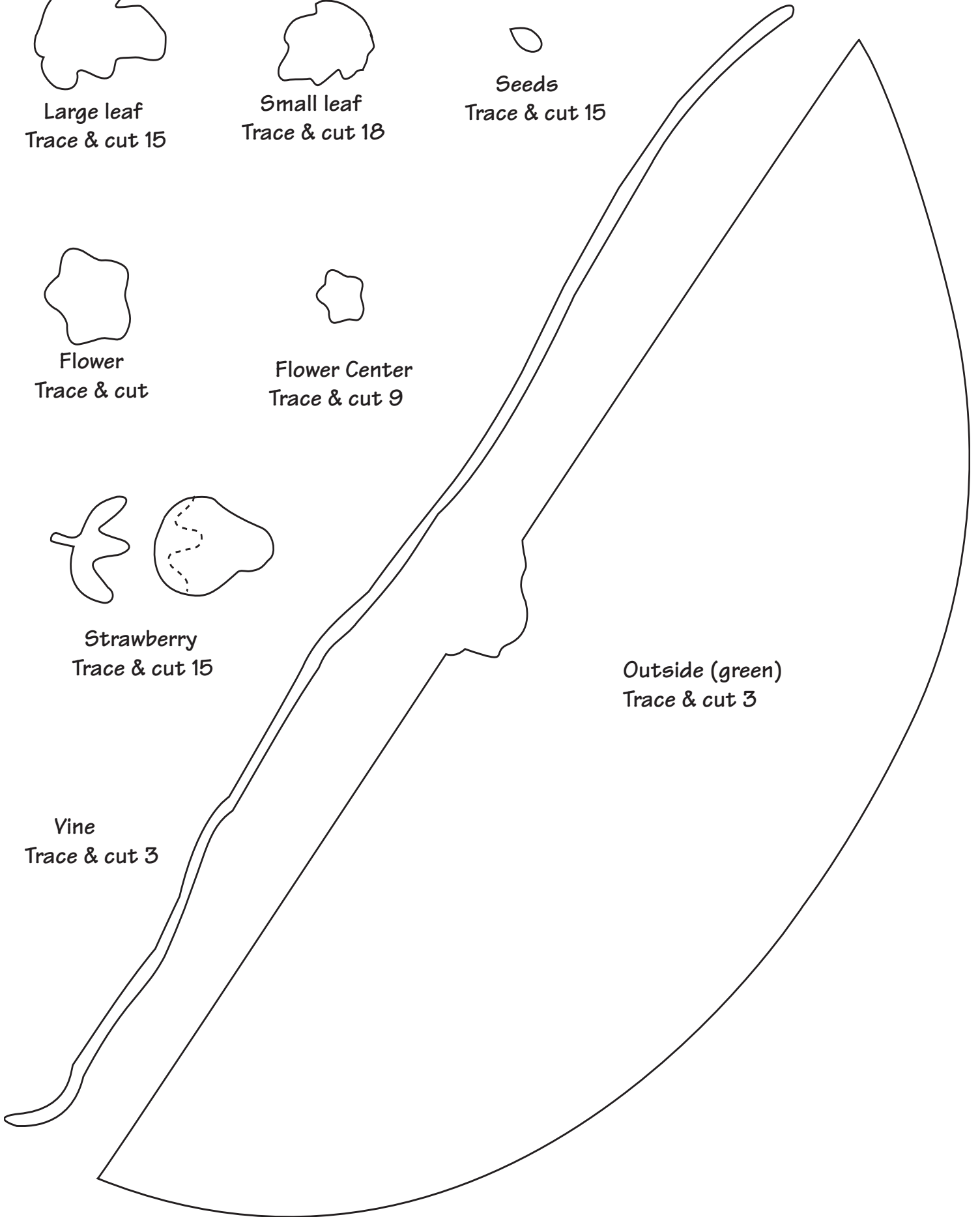
Flower Center
Trace & cut 9



Strawberry
Trace & cut 15

Vine
Trace & cut 3

Outside (green)
Trace & cut 3



Inside (red)
Trace and Cut 3

Middle (cream)
Trace and cut 3



Placement Guides

